

**Water for Southwest Georgia's Future:
An Informational Program for Local Leaders**

An aerial photograph of a rural landscape in Georgia, showing a patchwork of agricultural fields in various shades of green, brown, and tan. A winding river, labeled "Flint River", flows through the center of the image. The word "Welcome!" is overlaid in large white serif font across the middle of the image.

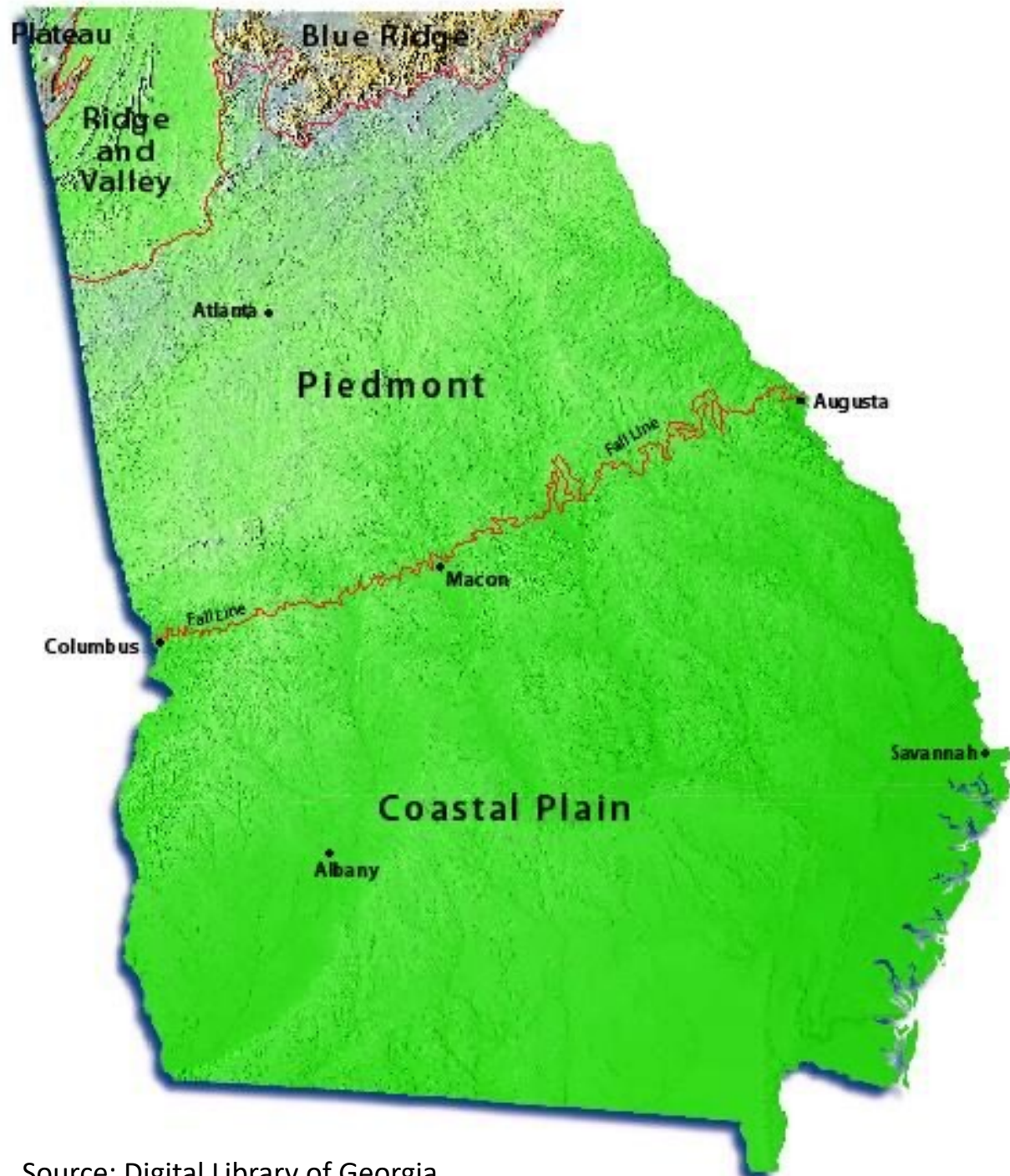
Welcome!

Camilla, Georgia | September 27, 2022

Indicate the following on your map:

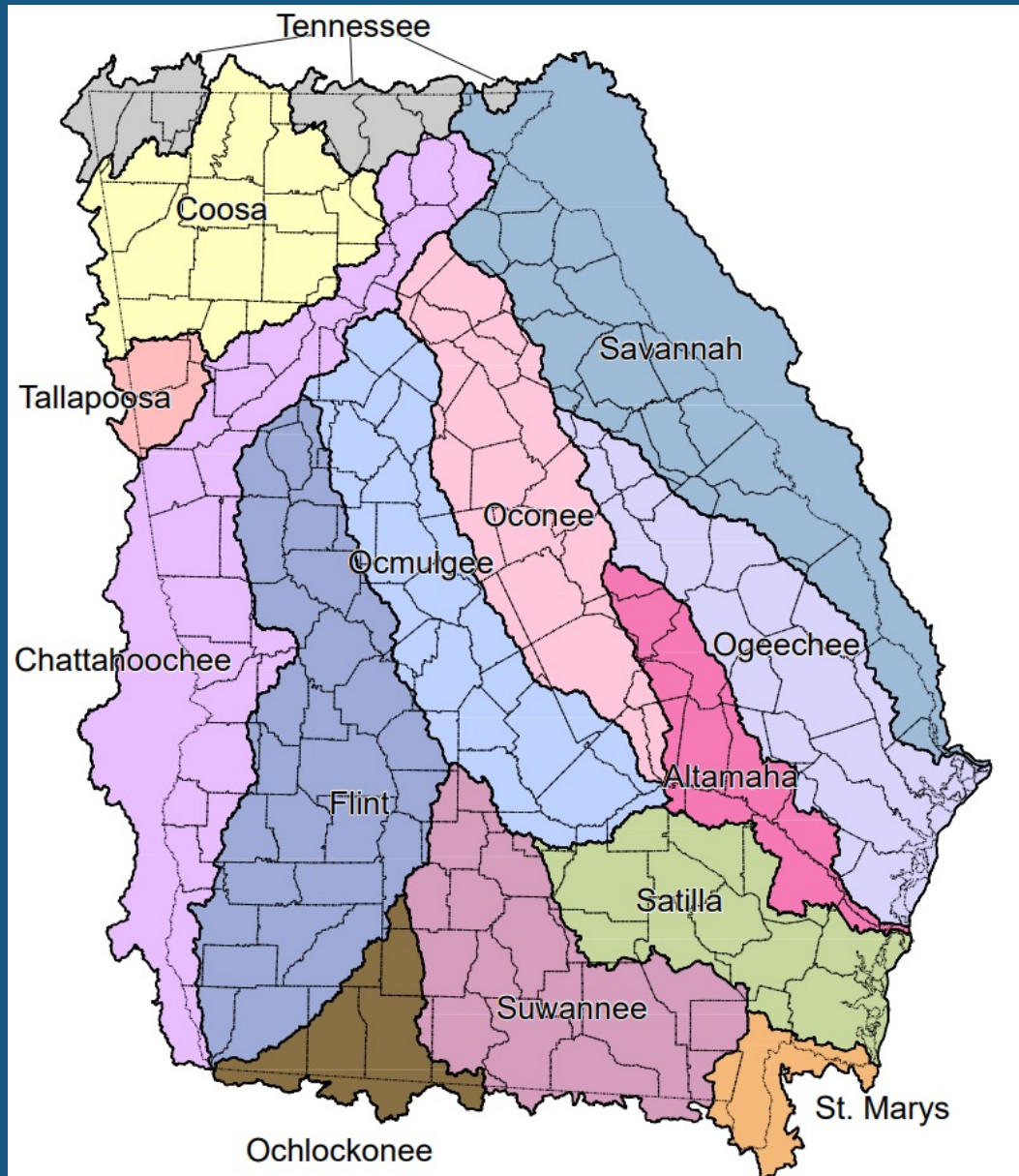
- The county you live in
- The fall line
- The major river basin you live in
- What is upstream (major cities, other river basins, etc)? What is downstream? Why does this matter?
- The area of the state where surface water is used most for water supply
- The area of the state where groundwater is used most for water supply
- Name the source of your drinking water
- Name your water planning region
- When was the last time your region had a major drought?

Georgia's Fall line



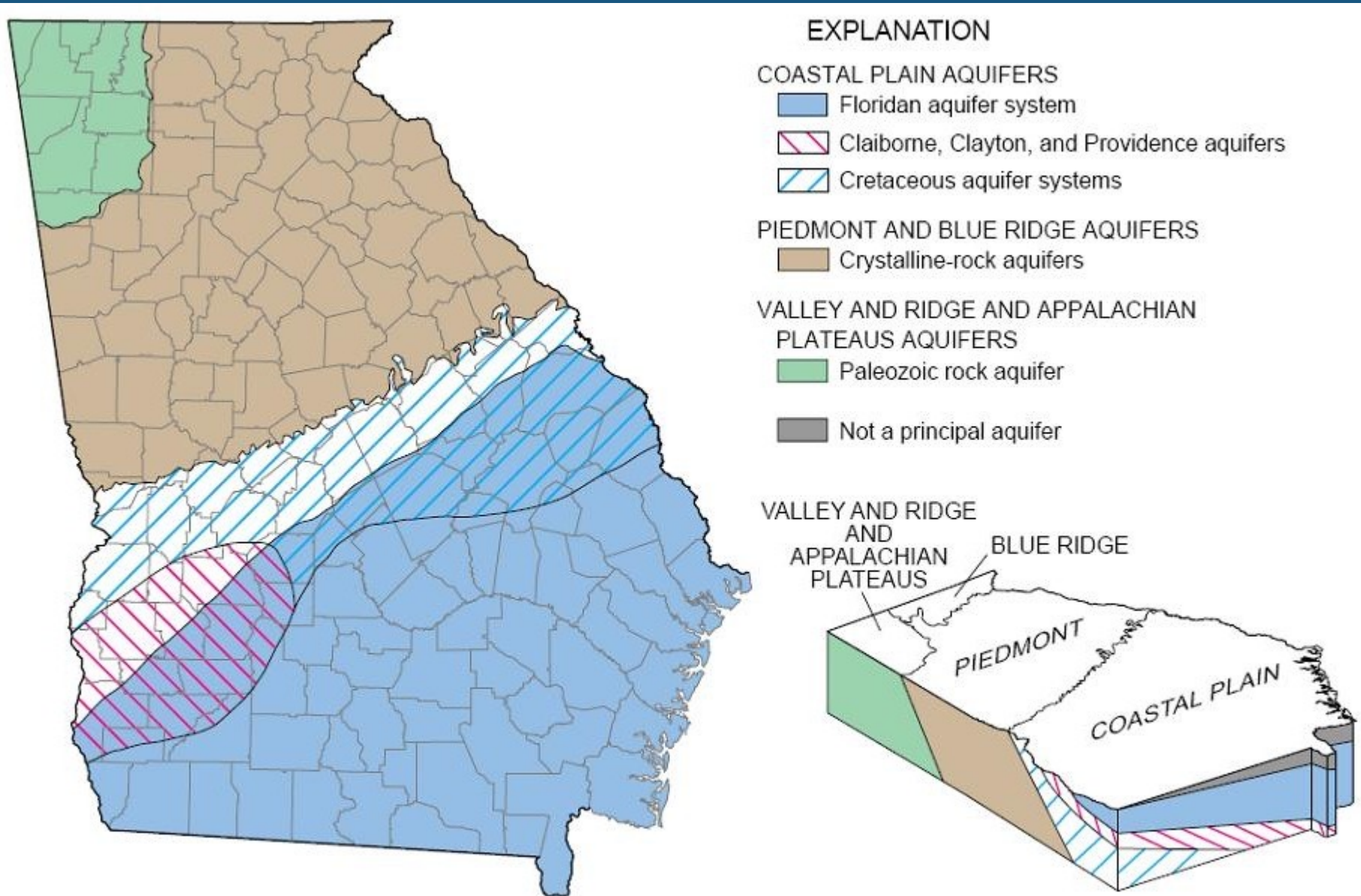
Source: Digital Library of Georgia

River Basins

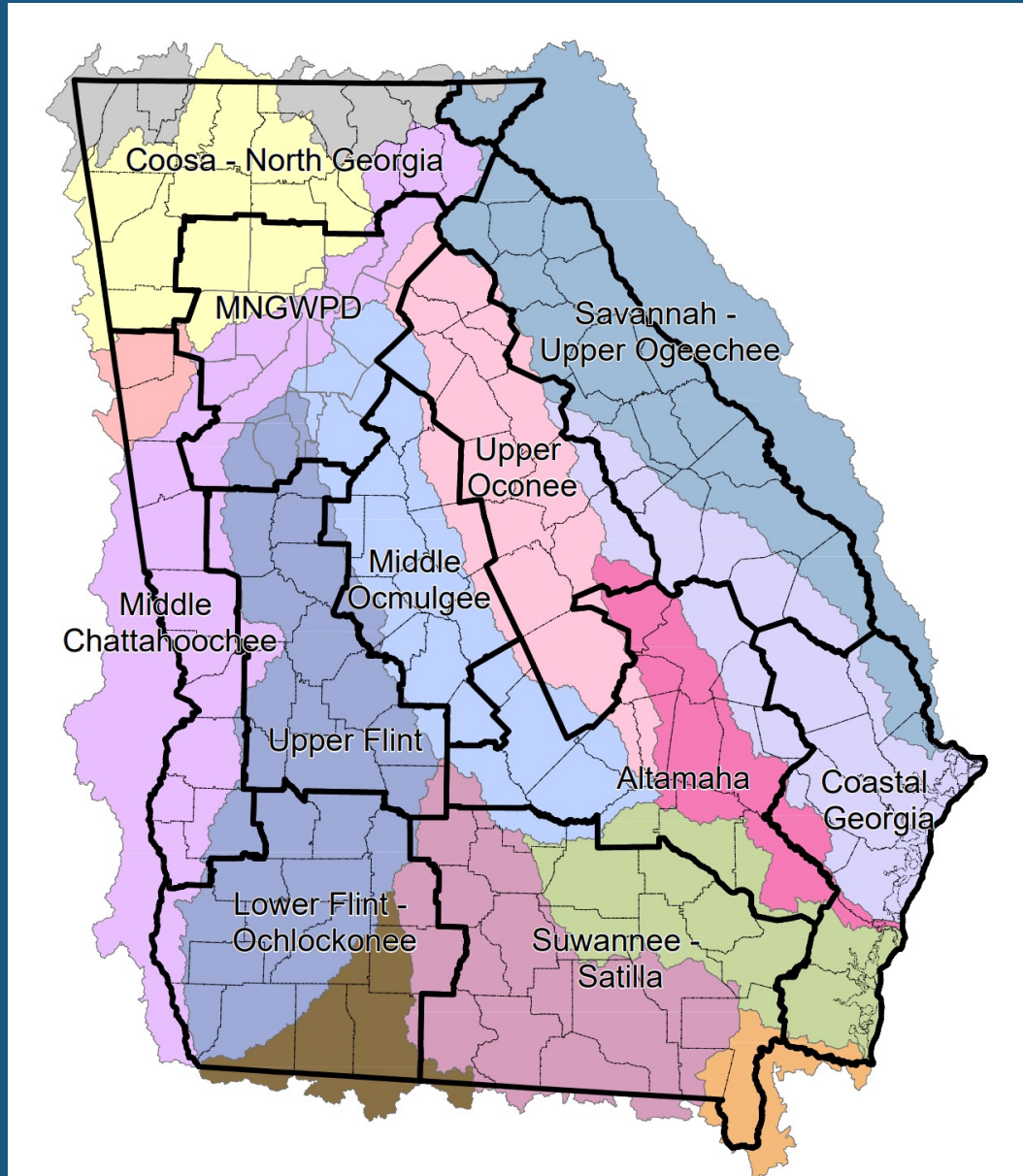


Source: GA EPD

Aquifers and Groundwater Use



Water Planning Regions









Significant Georgia Droughts

September 2007

June 2011

Intensity:

-  None
-  D0 Abnormally Dry
-  D1 Moderate Drought
-  D2 Severe Drought
-  D3 Extreme Drought
-  D4 Exceptional Drought

The Drought Monitor focuses on broad-scale conditions. Local conditions may vary. See accompanying text summary for forecast statements.

Author:

Richard Heim
NCEI/NOAA



droughtmonitor.unl.edu

